





Startområdet / Start area

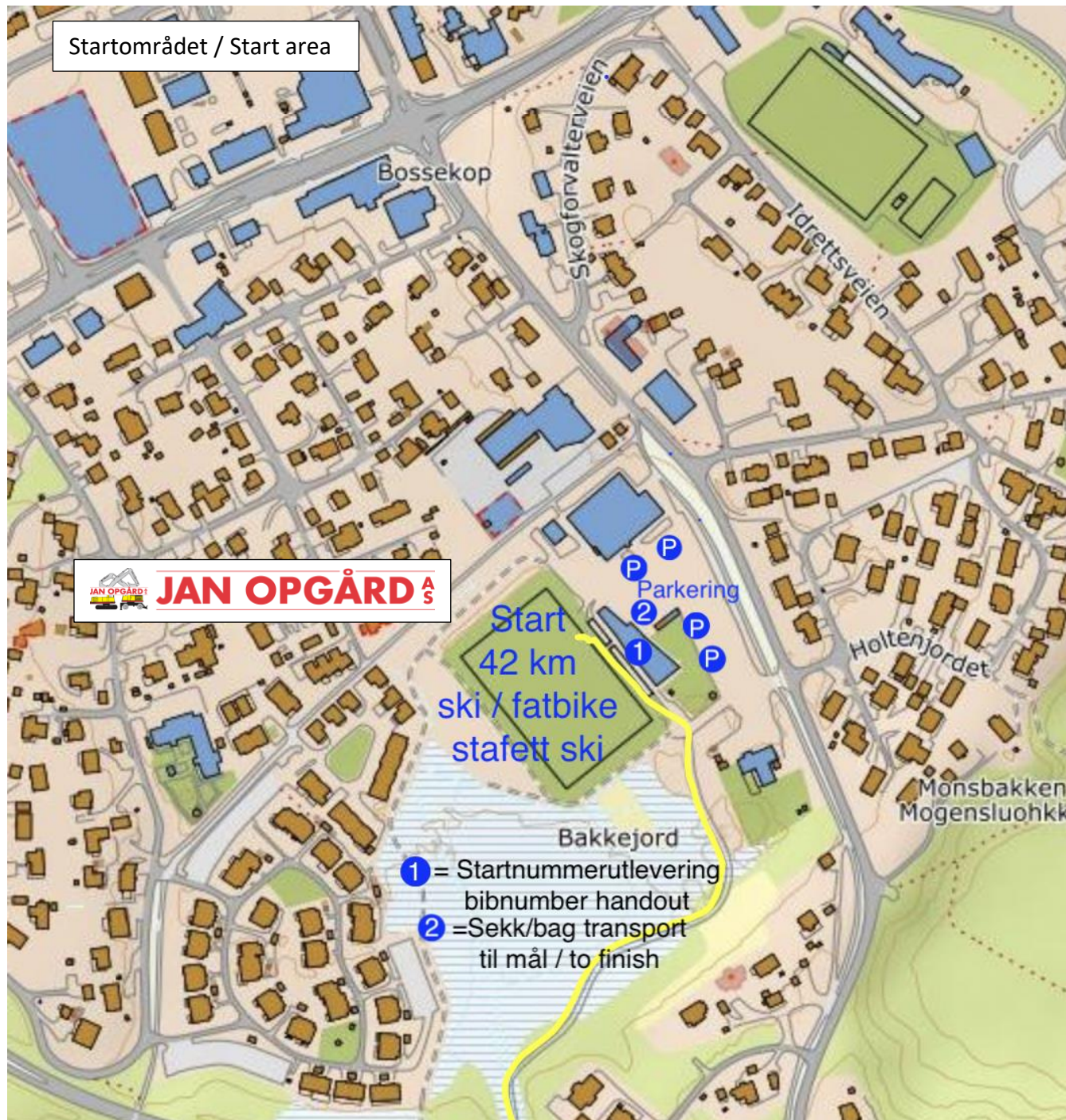


JAN OPGÅRD AS

Start
42 km
ski / fatbike
stafett ski

Parking
P
P
P
P
P
P
P
P
P
P

- ① = Startnummerutlevering
bibnumber handout
- ② = Sekk/bag transport
til mål / to finish



Eiby – 10 km
første sjekkpunkt / spurtpris
hensynsfull parkering
langs Skillemoveien for stafettdeltakere

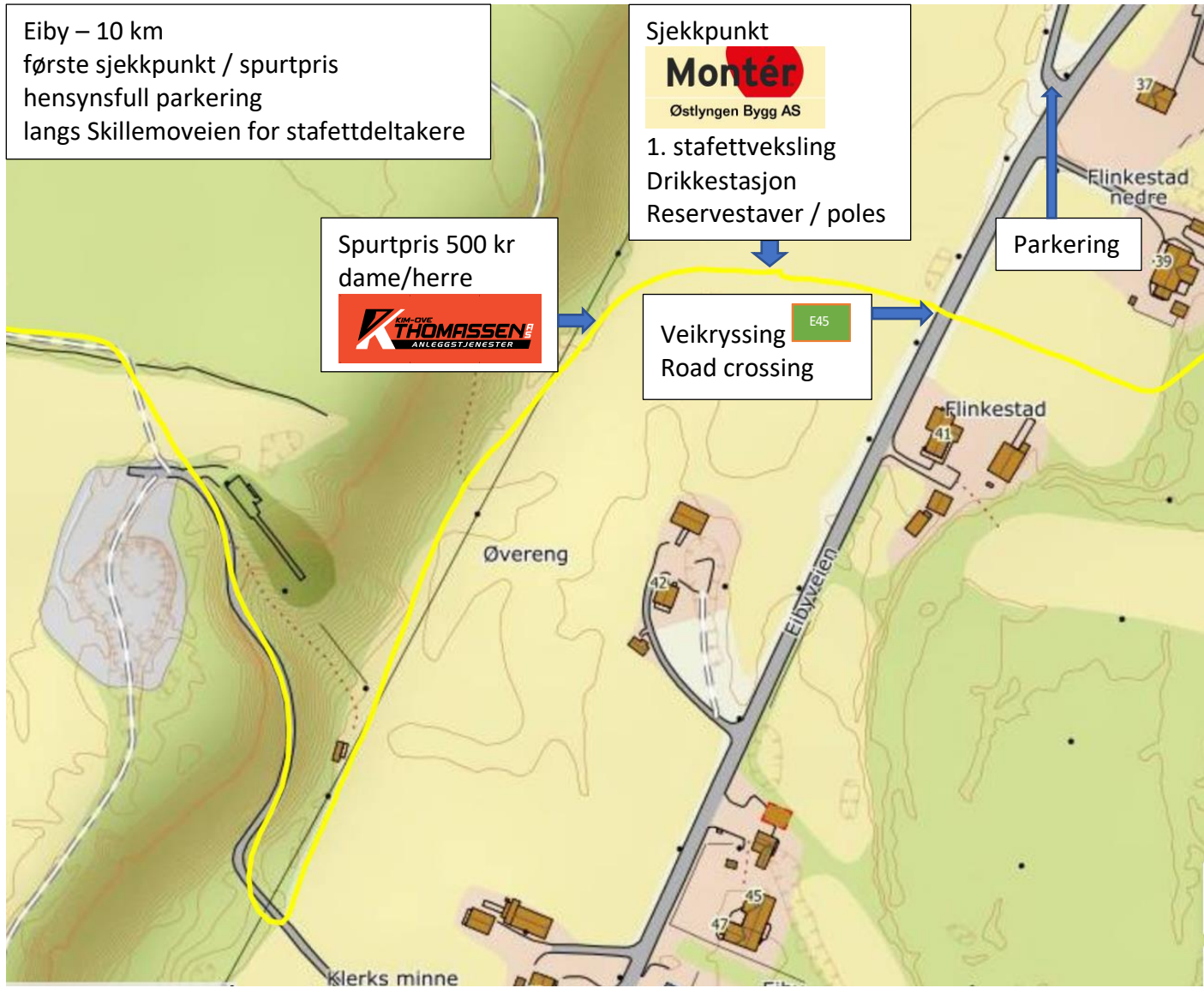
Spurtpris 500 kr
dame/herre

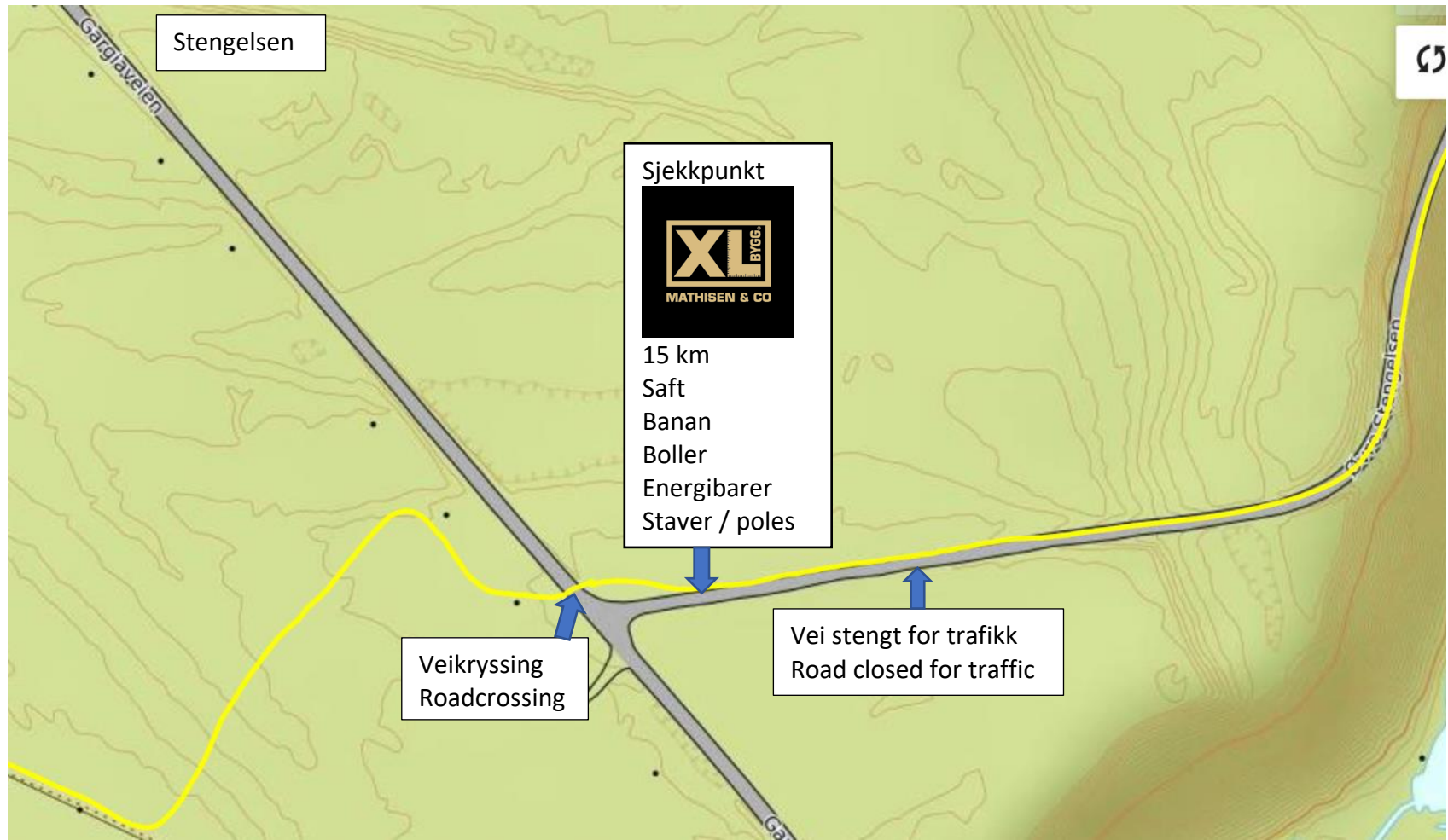


Sjekkpunkt
Montér
Østlyngen Bygg AS
1. stafettveksling
Drikkestasjon
Reservestaver / poles

Veikryssing E45
Road crossing

Parkering





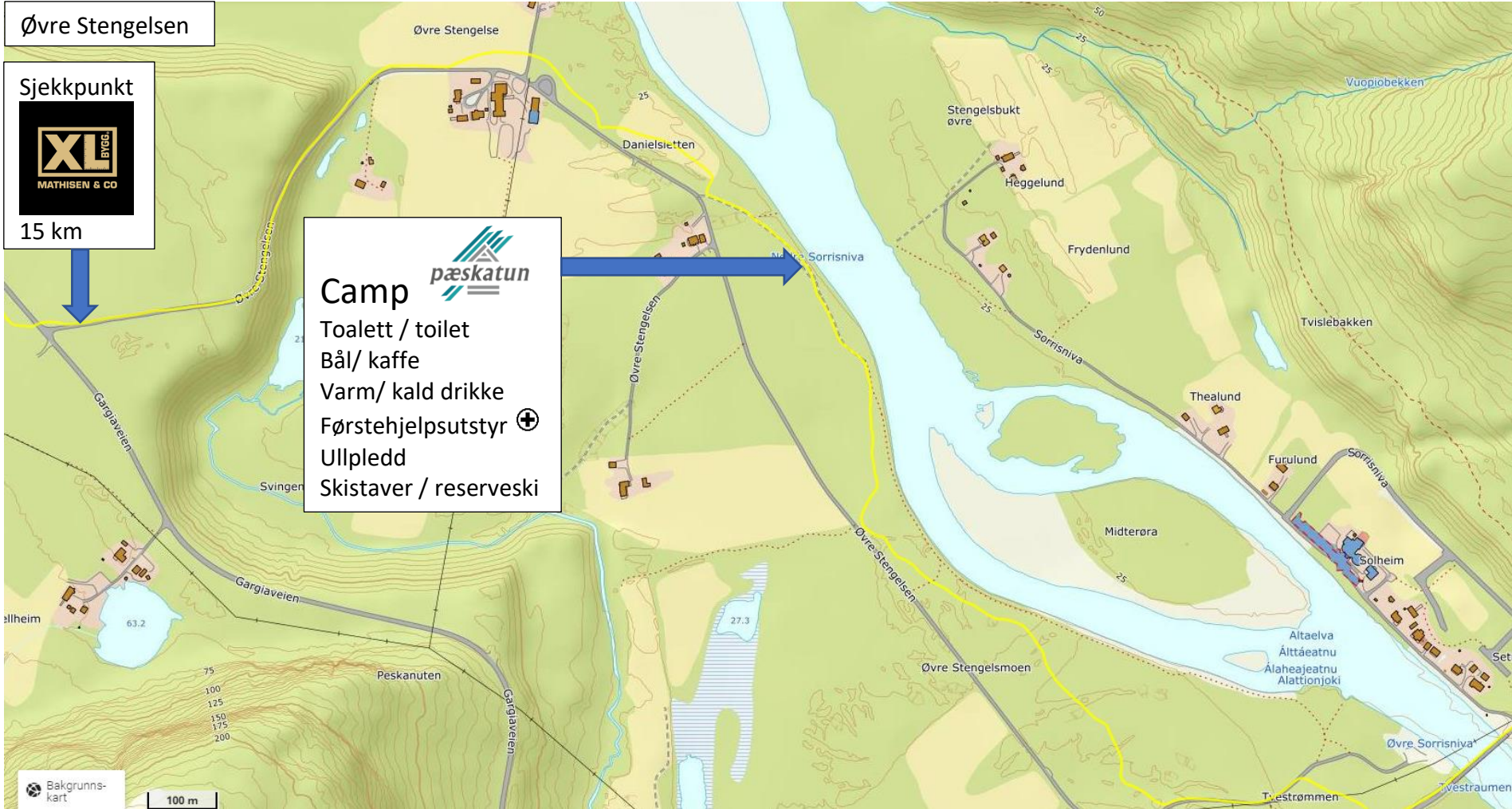
Stengelsen

Sjekkpunkt
XL BYGG
MATHISEN & CO
15 km
Saft
Banan
Boller
Energibarer
Staver / poles

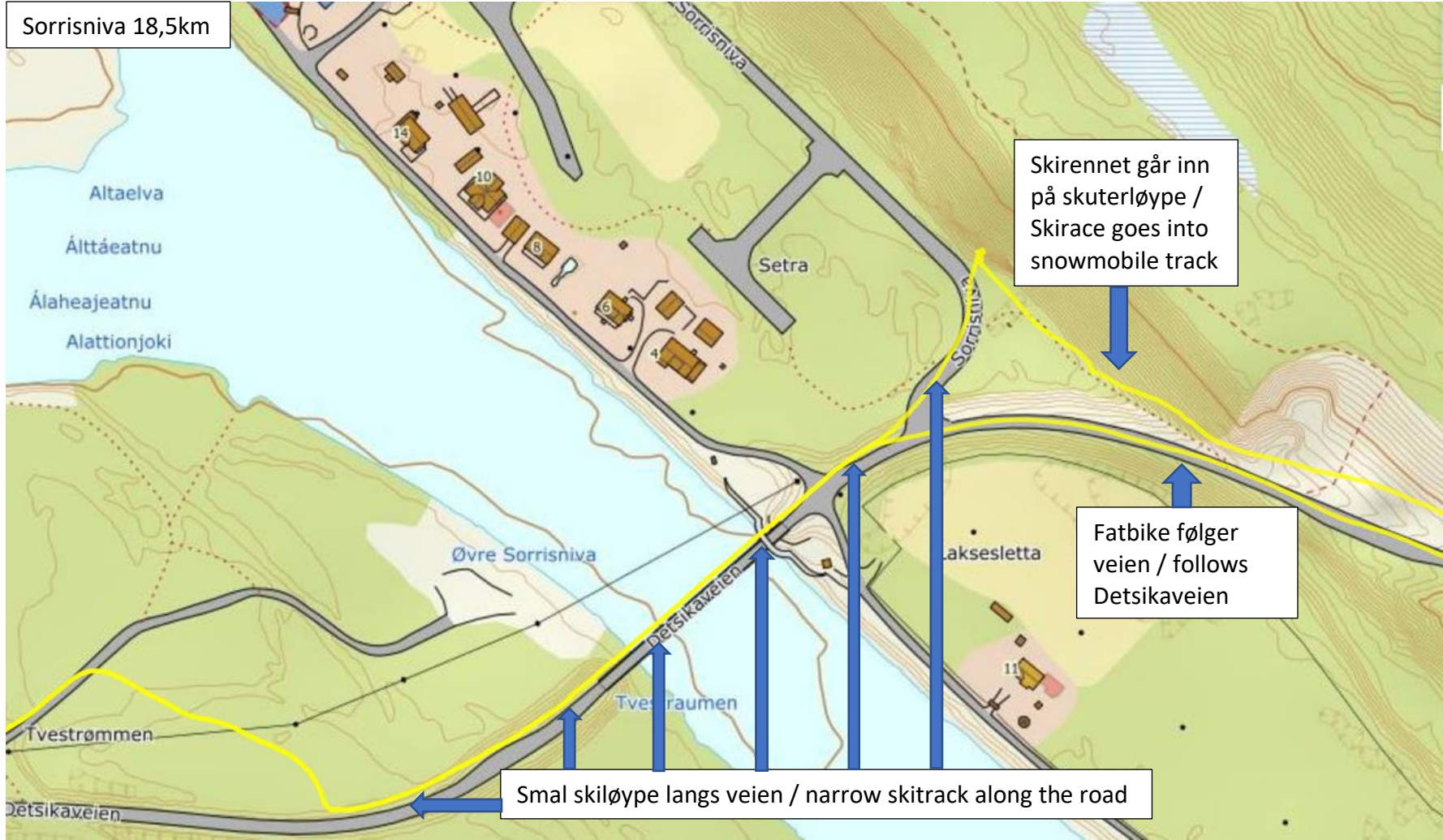
Veikryssing
Roadcrossing

Vei stengt for trafikk
Road closed for traffic





Sorrisniva 18,5km



Skirennet går inn på skuterløype / Skirace goes into snowmobile track

Fatbike følger veien / follows Detsikaveien

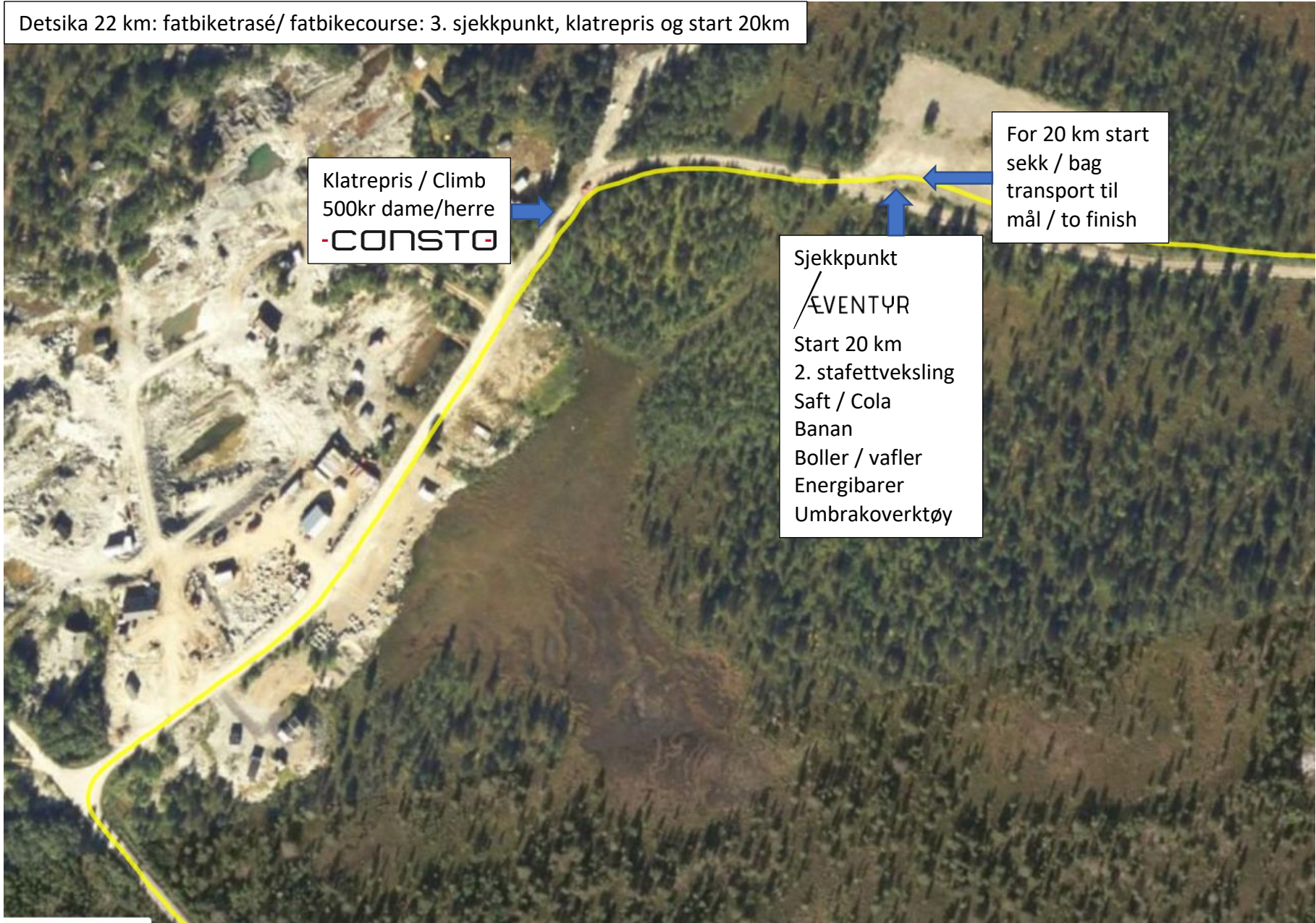
Smal skiløype langs veien / narrow skitrack along the road

Detsika 22 km: fatbiketrasé/ fatbikecourse: 3. sjekkpunkt, klatrepris og start 20km

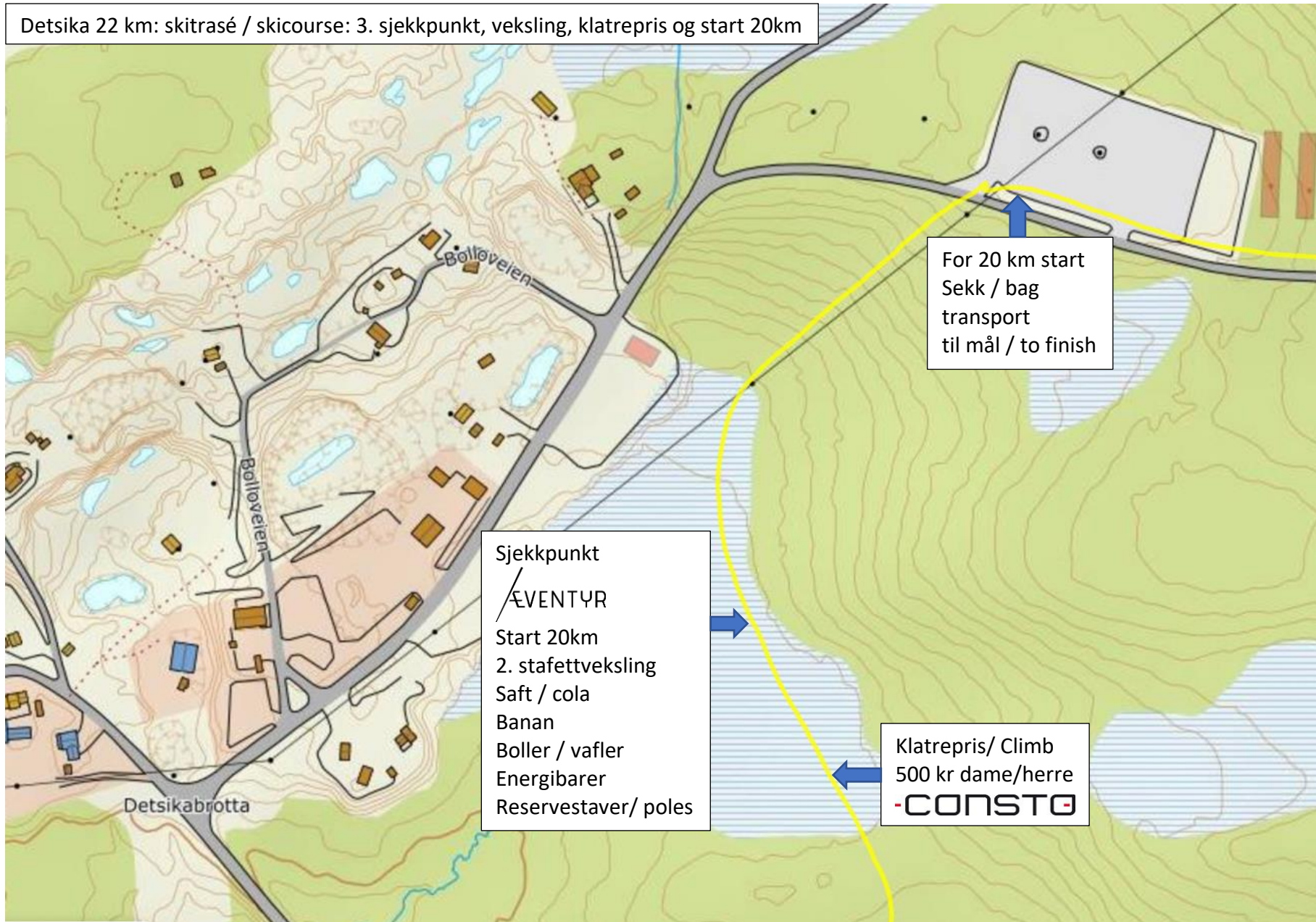
Klatrepris / Climb
500kr dame/herre
-CONSTO-

For 20 km start
sekk / bag
transport til
mål / to finish

Sjekkpunkt
/ ÆVENTYR
Start 20 km
2. stafettveksling
Saft / Cola
Banan
Boller / vafler
Energibarer
Umbrakoverktøy



Detsika 22 km: skitrasé / skicourse: 3. sjekkpunkt, veksling, klatrepris og start 20km



For 20 km start
Sekk / bag
transport
til mål / to finish

Sjekkpunkt
ÆVENTYR
Start 20km
2. stafetteksling
Saft / cola
Banan
Boller / vafler
Energibarer
Reservestaver/ poles

Klatrepris/ Climb
500 kr dame/herre
-CONSTO-





Kaiskuru: Målområdet / finish area

Inngang / Entry Kafé
Dusch / garderobes
Deltakerpremier
Premieutdeling /
Prize giving ceremony

Parkering

Sekker / bags
fra / from start

Mål
Finish



